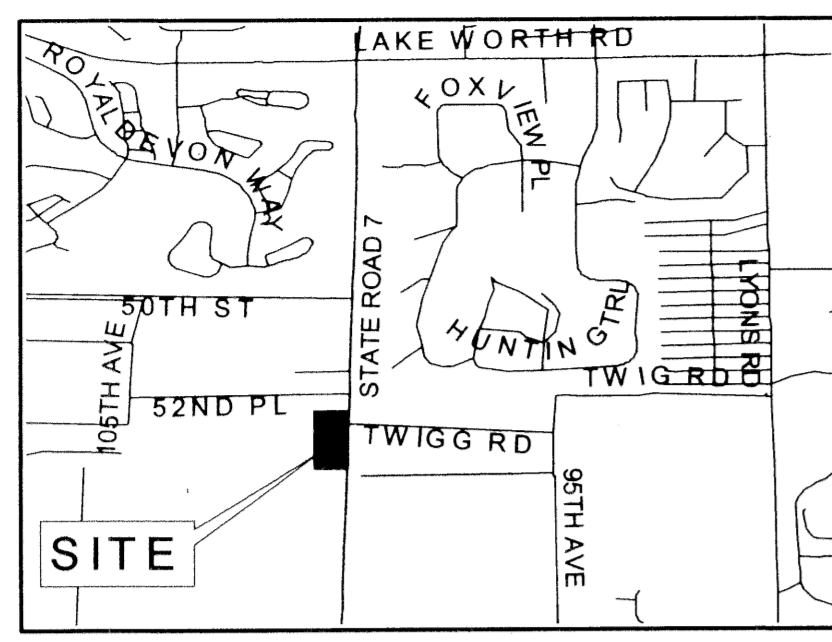
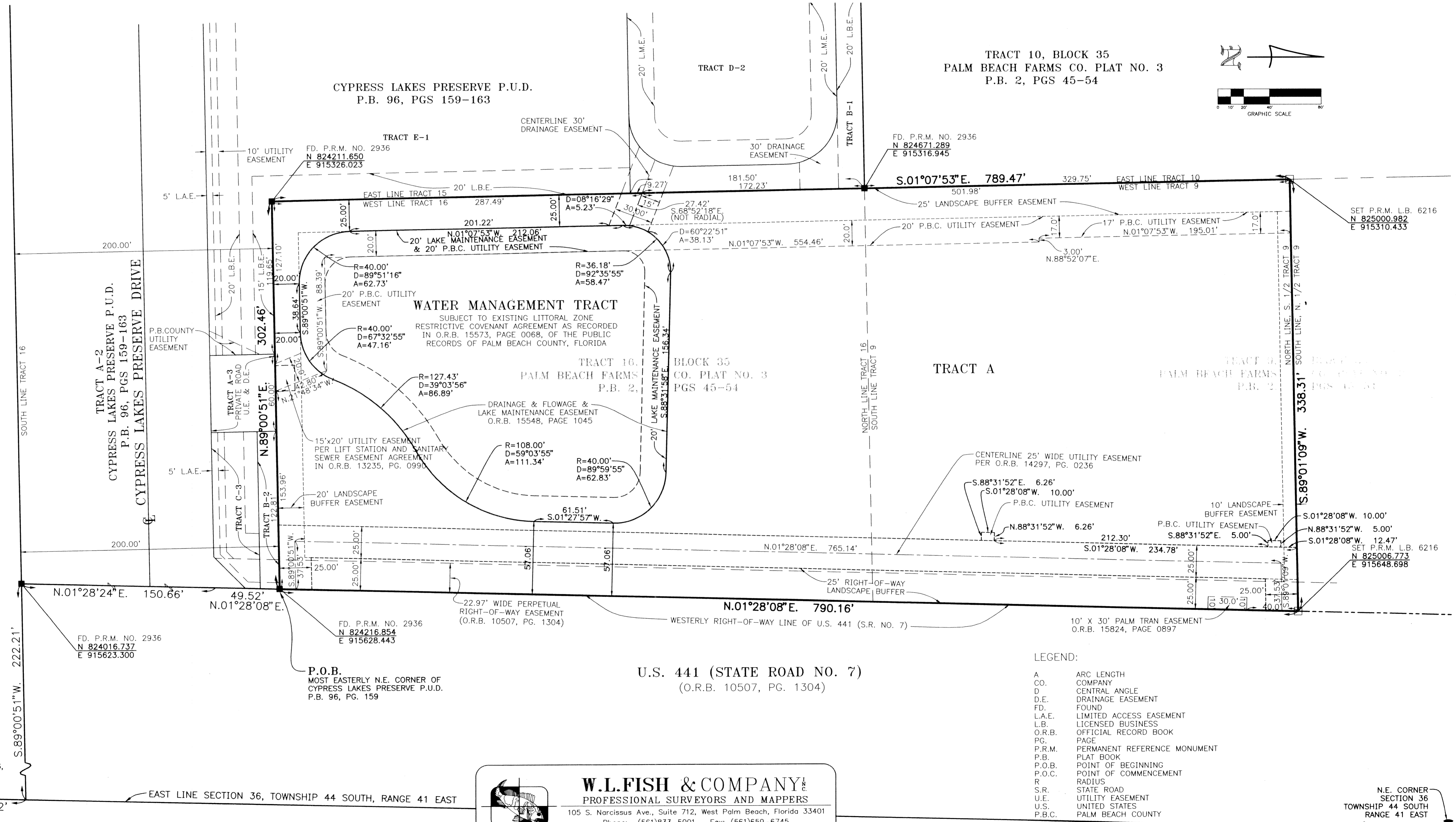
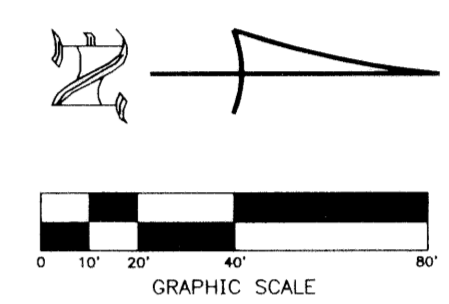


CYPRESS LAKES PRESERVE MUPD

**BEING A REPLAT OF PORTIONS OF TRACTS 9 AND 16, BLOCK 35,
PALM BEACH FARMS COMPANY PLAT NO. 3, AS RECORDED IN PLAT BOOK 2,
PAGES 45 THROUGH 54, PUBLIC RECORDS OF PALM BEACH COUNTY, FLORIDA,
LYING IN SECTION 36, TOWNSHIP 44 SOUTH, RANGE 41 EAST,
PALM BEACH COUNTY, FLORIDA
APRIL, 2003 SHEET 2 OF 2**



LOCATION MAP
NOT TO SCALE



LEGEND:

A	ARC LENGTH
CO.	COMPANY
D	CENTRAL ANGLE
D.E.	DRAINAGE EASEMENT
FD.	FOUND
L.A.E.	LIMITED ACCESS EASEMENT
L.B.	LICENSED BUSINESS
O.R.B.	OFFICIAL RECORD BOOK
PG.	PAGE
P.R.M.	PERMANENT REFERENCE MONUMENT
P.B.	PLAT BOOK
P.O.B.	POINT OF BEGINNING
P.O.C.	POINT OF COMMENCEMENT
R	RADIUS
S.R.	STATE ROAD
U.E.	UTILITY EASEMENT
U.S.	UNITED STATES
P.B.C.	PALM BEACH COUNTY

W.L.FISH & COMPANY
PROFESSIONAL SURVEYORS AND MAPPERS
105 S. Narcissus Ave., Suite 712, West Palm Beach, Florida 33401
Phone: (561)833-5001 - Fax: (561)659-6745
E-mail: mappers@wlfish.com L.B. 6216

SUBDIVISION Cypress Lakes Preserve MUPD
 BOOK 100 PAGE 108
 FLOOD ZONE B
 QUAD # 05
 SS
 TAZ 1021
 PUB NAME

P.O.C.
S.E. CORNER SECTION 36,
TOWNSHIP 44 SOUTH
RANGE 41 EAST

N.E. CORNER
SECTION 36
TOWNSHIP 44 SOUTH
RANGE 41 EAST